

LIVING SYSTEMS, LIVING VALUES: THE LESSONS OF INDIGENOUS REGENERATIVE ECOSYSTEM DESIGN



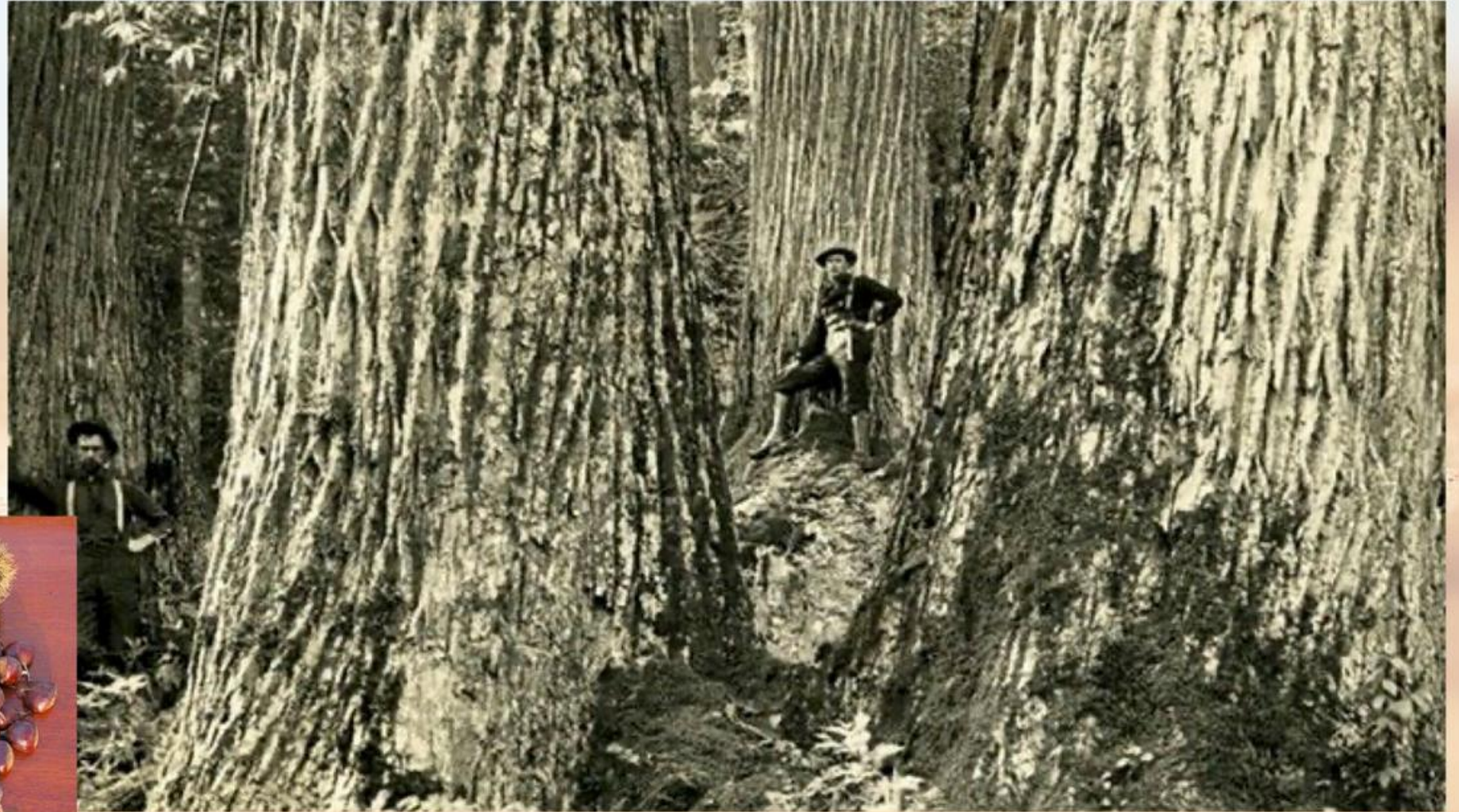
Dr. Lyla June Johnston
Author/Musician/Community Organizer

INDIGENOUS FOOD SYSTEMS

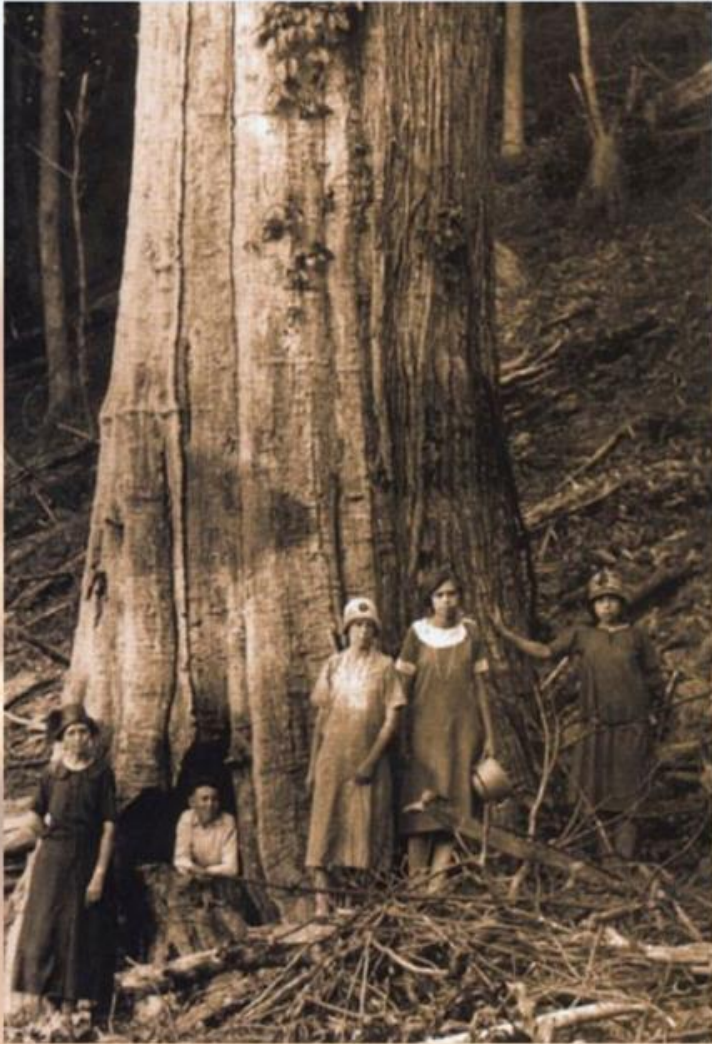
AND THEIR LESSONS FOR THE CLIMATE



SHAWNEE CHESTNUT GROVES



SHAWNEE CHESTNUT GROVES



SHAWNEE CHESTNUT GROVES

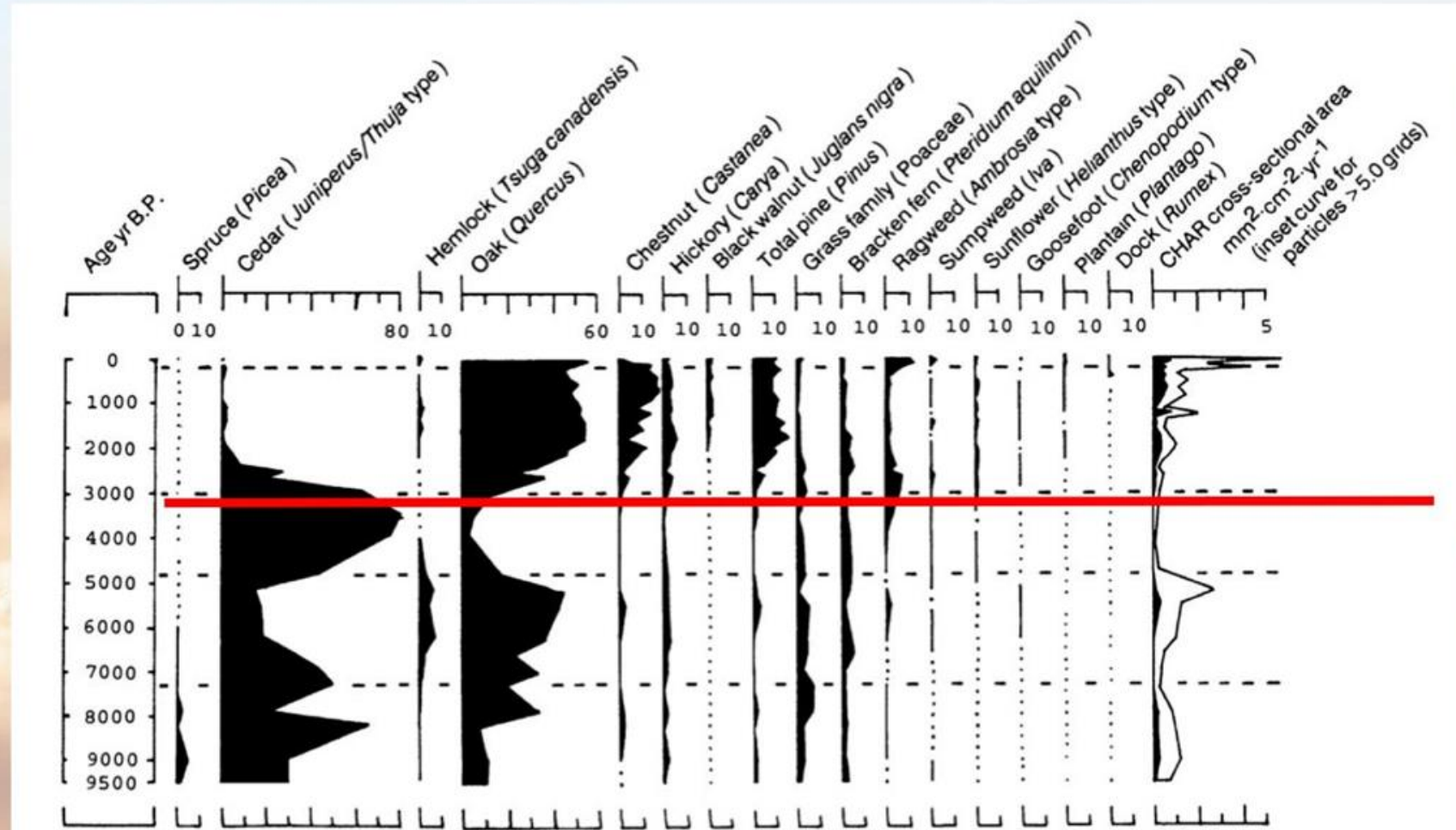
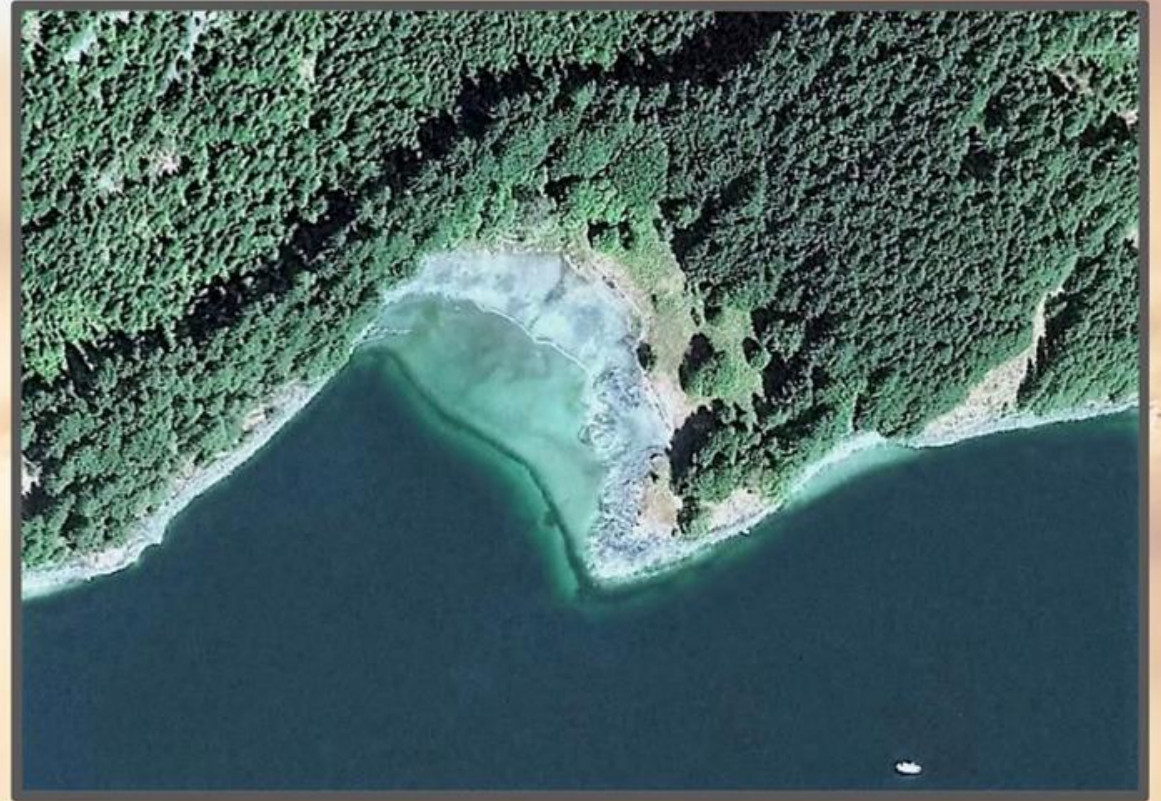


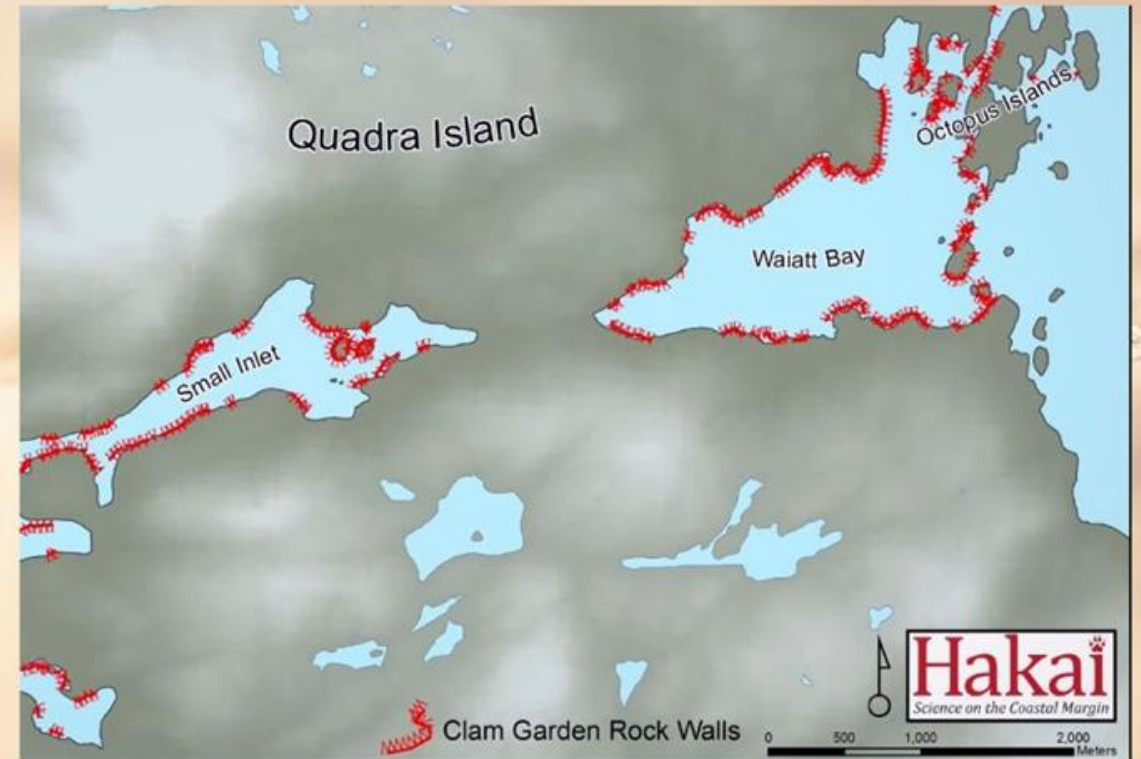
Figure 7. Summary diagram from Cliff Palace Pond for selected fossil pollen taxa and charcoal accumulation rates for cross-sectional area (total charcoal and inset curve for large charcoal particles > 5.0 grids).

KWAKWAKA'WAKW CLAM GARDENS

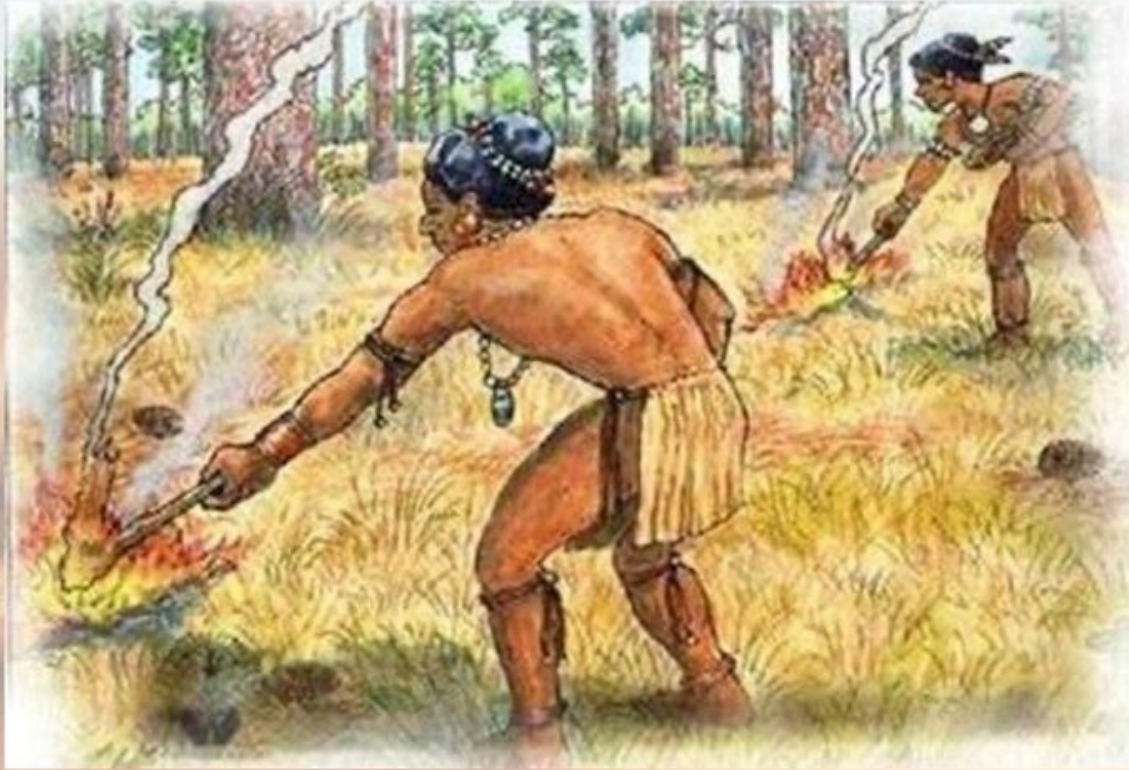


Groesbeck, A. S., Rowell, K., Lepofsky, D., & Salomon, A. K. (2014). Ancient clam gardens increased shellfish production: adaptive strategies from the past can inform food security today. *PloS one*, 9(3), e91235.

CLAM GARDENS

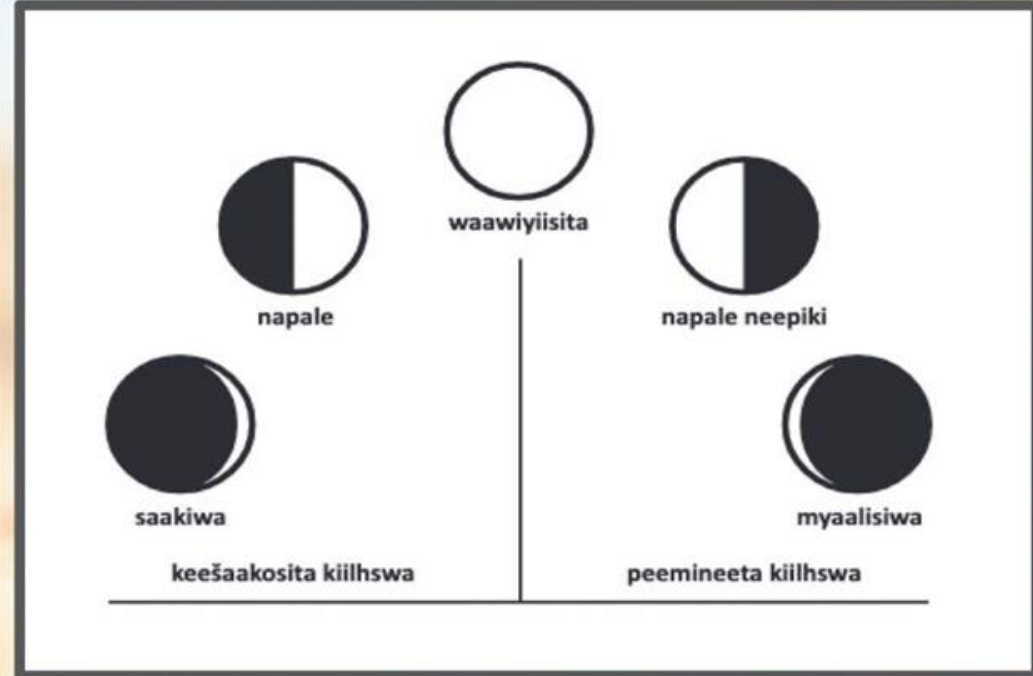


NATIVE AMERICAN GRASSLAND PYRO-MANAGEMENT



“[THE ILLINOIS CONFEDERACY] SHAPED AND ALTERED MUCH OF THIS REGION AS AN ANTHROPOGENIC CREATION. LIKE MANY OTHER INDIGENOUS GROUPS IN NORTH AMERICA, THEIR MOST IMPORTANT TOOL WAS FIRE. BURNING THE PRAIRIES, THEY MADE THE GRASSES HOSPITABLE FOR GRAZERS, AND MANAGED PRAIRIE AS A GAME RESERVE TO MAXIMIZE PRODUCTIVITY (MORRISEY, 2019, P. 56).

NATIVE AMERICAN GRASSLAND PYRO-MANAGEMENT



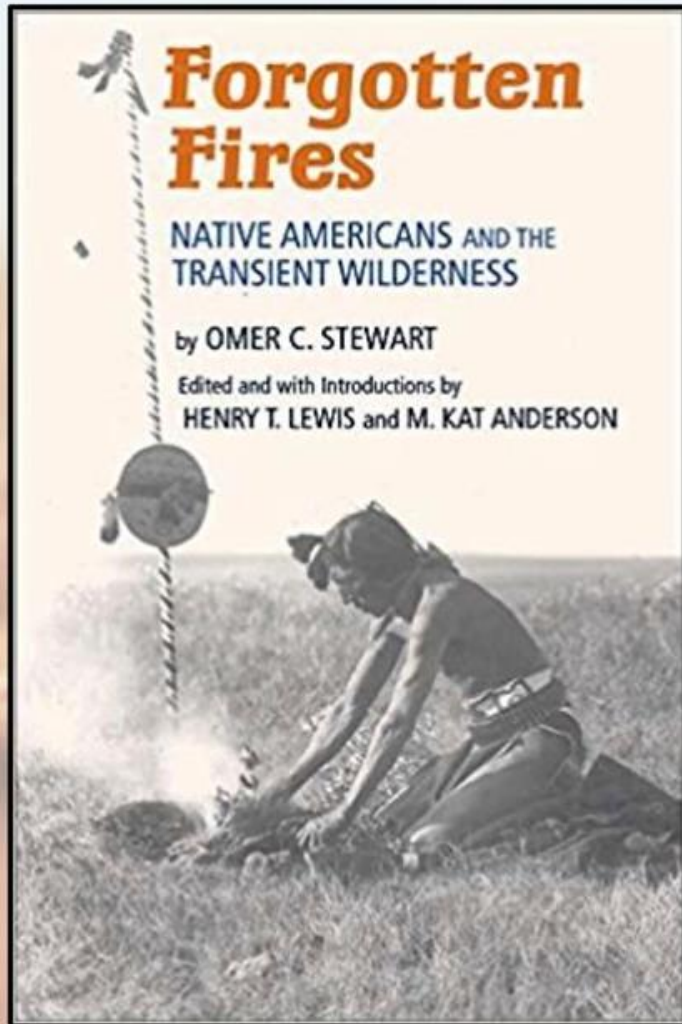
MYAMMIA LUNAR CALENDAR: THE GRASS BURNING MOON

NATIVE AMERICAN GRASSLAND PYRO-MANAGEMENT



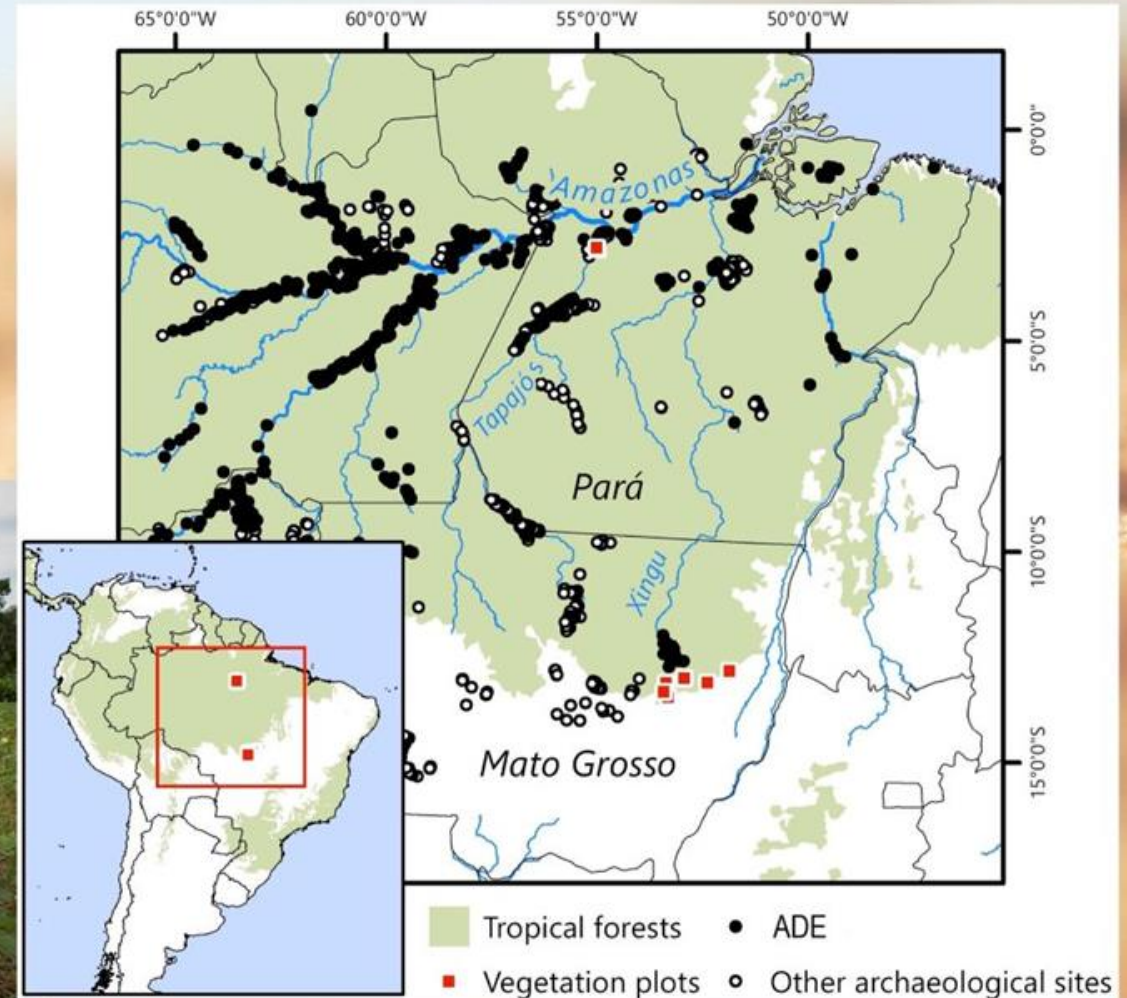
“IN SAAŠAAKAYOLIA KIILHWA, WE SEE FIRE AS SOMETHING THAT RESTORES AND GIVES NEW LIFE TO THE PRAIRIE. FIRE HELPS CLEAR THE LAND OF OLD GRASS AND BRUSH AND OPENS SEED PODS THAT HAVE FALLEN TO THE GROUND. BECAUSE OF FIRE, NEW FLOWERS AND PLANTS EMERGE IN THE SPRING”
(MCCOY ET AL, 2011, P. 60).

AMERICAN GRASSLANDS PYRO-MANAGEMENT



Mebêngôkre (Kayapó) Soil Management

Amazonian “Dark Earths”



NORWEGIAN HOLOCENE PYRO-MANAGEMENT



Intentional fire management in the Holocene with emphasis on hunter-gatherers in the Mesolithic in South Norway

December 2016

Edition: 1st · Publisher: Museum of Archaeology, University of Stavanger · Editor: Lisbeth Prøsch-Danielsen · ISBN: ISBN 978-82-7760-171-7

 Lotte Selsing

[Overview](#)

[Stats](#)

[Comments](#)

[Citations \(12\)](#)

[References \(332\)](#)

[...](#)

[Abstract and figures](#)

Research
Citation
Recomm
Reads (

NORWEGIAN HOLOCENE PYRO-MANAGEMENT



“ANTHROPOGENIC BURNING WAS DIFFERENT FROM NATURAL FIRES. THE FIRES SET BY PEOPLE WERE SMALLER AND LESS INTENSE... THEY WERE PREDICTABLE, ALMOST IMMEDIATELY PRODUCTIVE, CREATING MOSAICS IN A COMPLEX PATTERN OF VEGETATION OF BURNT AND UNBURNT PATCHES. BECAUSE THEY REDUCED AVAILABLE FUEL, THEY PROVIDED PROTECTION AGAINST THE DISRUPTIONS OF NATURAL FIRES.”

INDIGENOUS REGENERATIVE ECOSYSTEM DESIGN



IREED



IRED GUIDING PRINCIPLES

respect

reciprocity

reverence

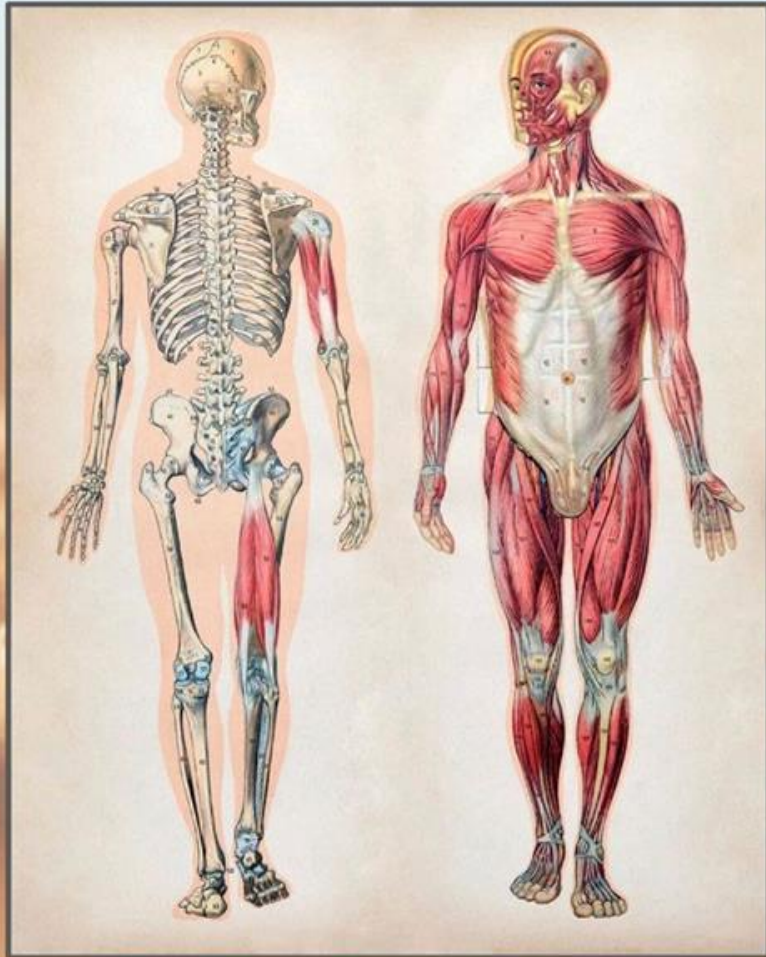
restraint

relationality

responsibility

regeneration

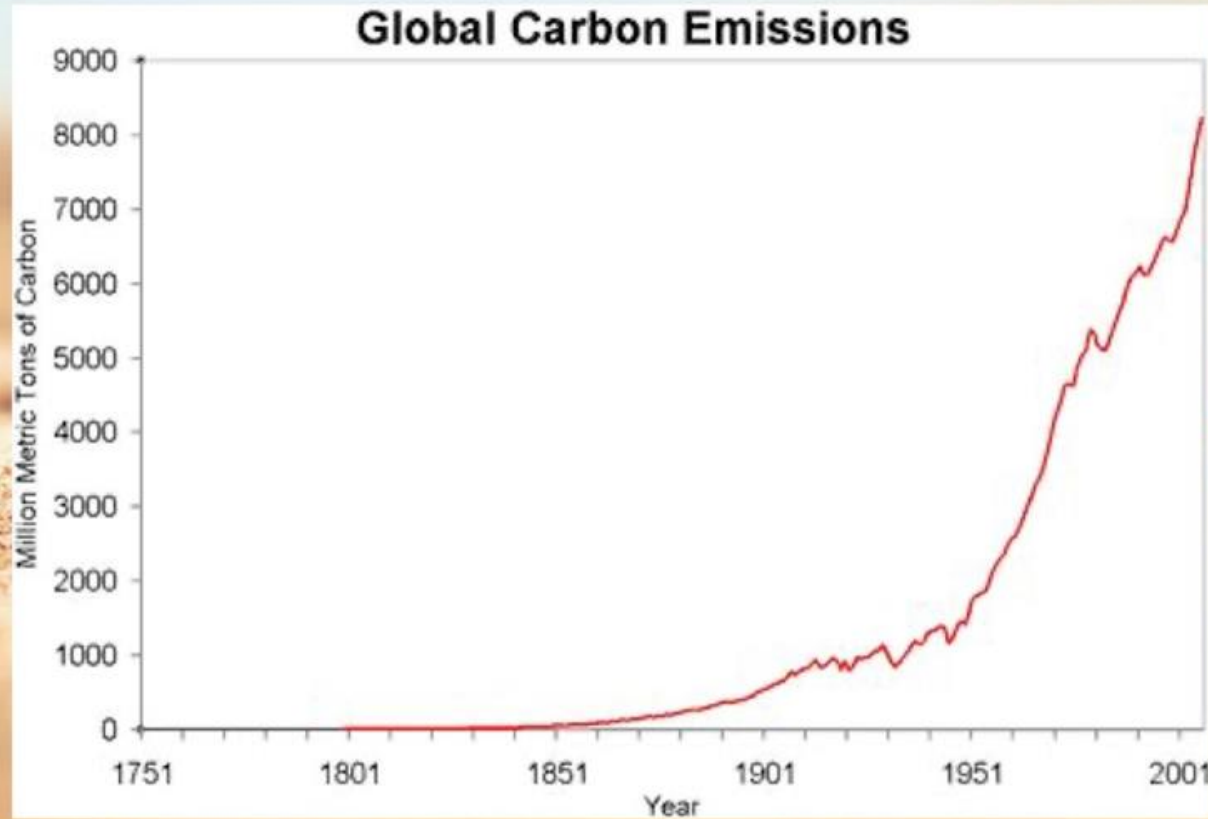
Hardware VS. Software



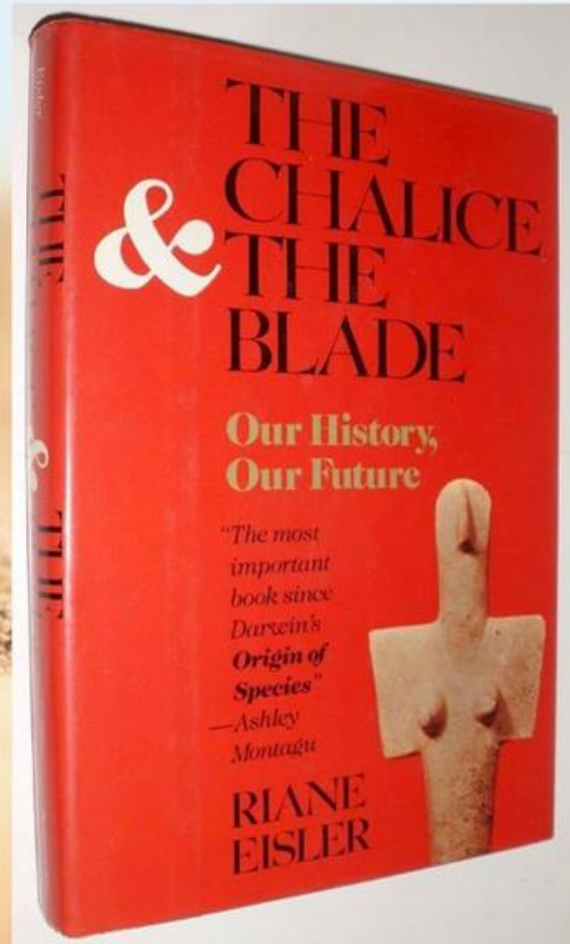
Homo Sapiens as Gift,
Human Beings as Keystone Species
Human Being as Emissary



When did “climate change” start?



When did “climate change” start?



When did “climate change” start?



Transition from givers to takers

THANK YOU

www.lylajune.com

Instagram: @lylajune

Youtube: Lyla June

Dissertation: “Architects of Abundance”